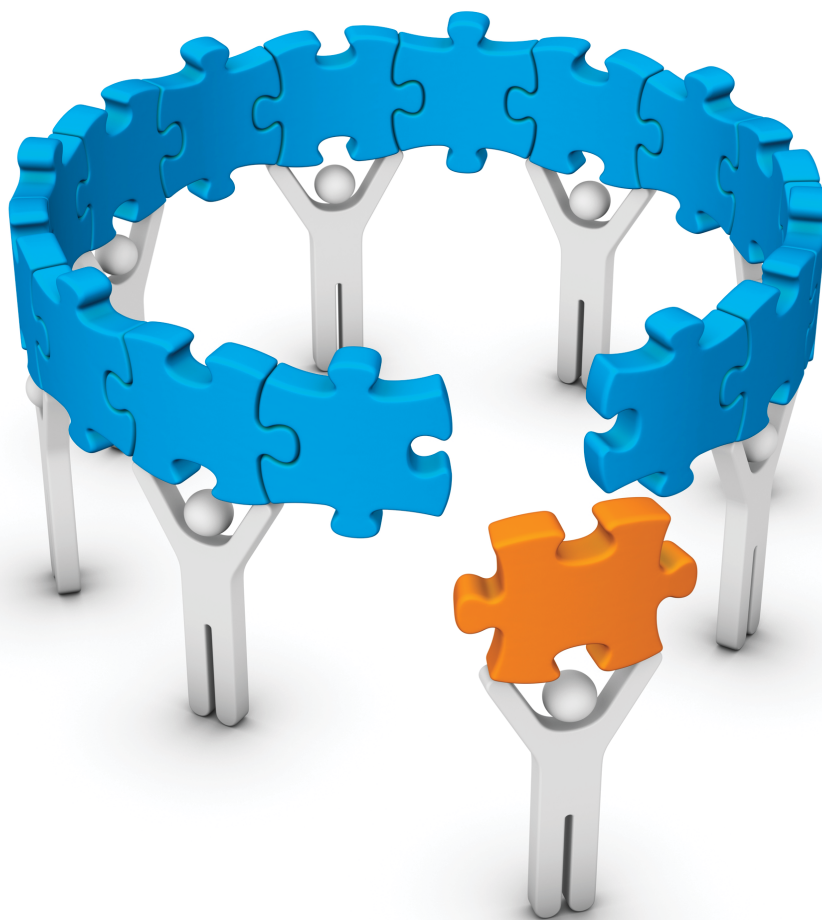


Engaging Workforce Development

A Framework for Meeting CRA Obligations



Elizabeth Sobel Blum
Federal Reserve Bank of Dallas



Federal Reserve
Bank of Dallas

Steve Shepelwich
Federal Reserve Bank of Kansas City



FEDERAL RESERVE BANK of KANSAS CITY
Denver • Omaha • Oklahoma City

December 2016

Appendix 3: Experts in Workforce Development

This appendix lists entities with expertise in workforce development and provides a synopsis of each entity's activities—in its own words—and a checklist of how it is involved in workforce development. The information comes from the entities' websites as of June/July 2016. The list is not all-inclusive. The Federal Reserve Banks of Dallas and Kansas City do not endorse these entities.

DEFINITIONS

Basic skills improvement: Programs that address skills and competencies such as interpersonal interactions, teamwork, promptness, etc.

Career pathways: Approach that aligns progressive training and skill development opportunities with identified career progression (e.g., certified nursing assistant to certified medical assistant to LPN)

College completion: Programs that help individuals complete college through wrap-around services, scheduling adjustments, financial assistance, prior learning assessments, etc.

Job-quality strategies: Policies and practices that improve job quality for lower-wage workers (e.g., job redesign, job scheduling and supportive services such as transportation and child care)

Sector strategies: Organizations that act as a connector or broker between workers and employers by identifying needs, resources and solutions

Skills development: Programs that develop specific skills and competencies that are important to employers.

Supportive services: Programs that provide access to services such as transportation, child-care, financial counseling, etc.

Two-generation approach: Strategy that addresses the needs of children and their parents or guardians in terms of employment, education and support services.

Experts in Workforce Development

Organizations	Basic Skills Improvement	Career Pathways	College Completion	Job-quality Strategies	Sector Strategies	Skills Development	Supportive Services	Two-Generation Approach
Alliance for Quality Career Pathways (AQCP)		x						
American Association of Community Colleges (AACCC)			x		x			
American Association of Retired Persons (AARP) Foundation		x						
Annie E. Casey Foundation				x	x		x	x
ASCEND at the Aspen Institute								x
Atlanta BeltLine	x	x			x	x	x	
BankWork\$	x	x				x		
Boston Foundation		x			x	x		
CAP Tulsa	x	x				x	x	
CareersSTAT		x		x	x			
Center for Law and Social Policy (CLASP)		x		x			x	x
Center for Work Ethic Development	x							
Corporation for a Skilled Workforce (CSW)		x			x	x		
Council for Adult and Experiential Learning (CAEL)	x	x	x		x			
Economic Opportunities Program (EOP) at the Aspen Institute				x	x	x		
Employment and Training Administration (ETA) at U.S. Department of Labor		x			x		x	
Employment Program at the Joyce Foundation	x		x		x			
Gaining Early Awareness and Readiness for Undergraduate Programs (GEAR UP)			x				x	
Georgetown University Center on Education and the Workforce (GEW)		x					x	
Goodwill Industries International	x	x					x	
Graduation Alliance		x	x		x		x	
Heldrich Center for Workforce Development		x			x			
International Economic Development Council (IEDC)	x	x			x			
Jobs for the Future (JFF)	x	x	x		x		x	
Learning for Action (LFA)		x						
Living Cities					x			
Manufacturing Institute at National Association of Manufacturers (NAM)					x	x		
MDRC					x			
Mi Casa Resource Center	x	x				x	x	x
National Alliance for Partnerships in Equity (NAPE)		x			x			
National Association of State Workforce Agencies (NASWA)		x			x			

Experts in Workforce Development

Organizations	Basic Skills Improvement	Career Pathways	College Completion	Job-quality Strategies	Sector Strategies	Skills Development	Supportive Services	Two-Generation Approach
National Association of Workforce Development Professionals (NAWDP)		x			x			
National Council for Workforce Education (NCWE)		x			x	x	x	
National Disability Institute (NDI)		x			x		x	
National Fund for Workforce Solutions		x		x	x		x	
National Governors Association (NGA)		x			x			
National Network of Sector Partners (NNSP)				x	x			
National Skills Coalition		x			x	x		
National Urban League	x	x			x			
NYC Center for Economic Opportunity (CEO)	x	x			x	x	x	
The Paraprofessional Healthcare Institute (PHI)		x		x	x			
Pathways to Work at United Way of Metropolitan Dallas		x			x	x		
Per Scholas		x			x	x		
Ray Marshall Center for the Study of Human Resources at University of Texas at Austin		x			x			x
Skill QUEST		x			x	x	x	
SkillUp Washington	x	x	x		x	x	x	
W.E. Upjohn Institute for Employment Research		x			x			
Wider Opportunities for Women (WOW)		x			x		x	
Working Families Success Network (WFSN)		x					x	
Working Poor Families Project (W/PFP)							x	
WorkPlace		x					x	
Year Up	x	x				x		