



**TEXAS BORDER STATES:
GROSS REGIONAL
PRODUCT,
INDUSTRIAL OUTPUT
AND EMPLOYMENT**



CONTENTS

GROSS REGIONAL PRODUCT

MANUFACTURING OUTPUT

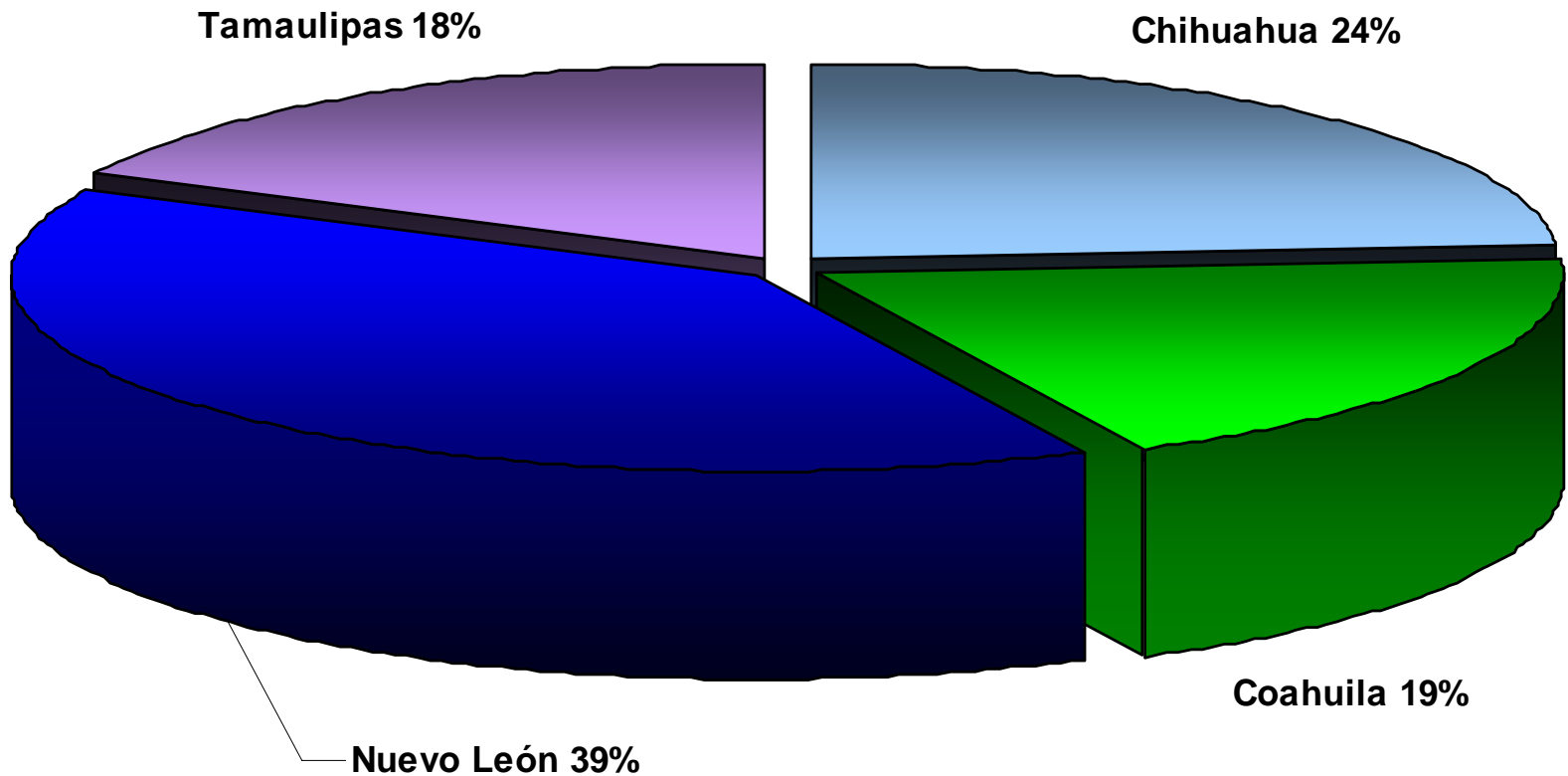
MAQUILADORA INDUSTRY

EMPLOYMENT

GROSS REGIONAL PRODUCT



TEXAS BORDER STATES GROSS REGIONAL PRODUCT (2004)

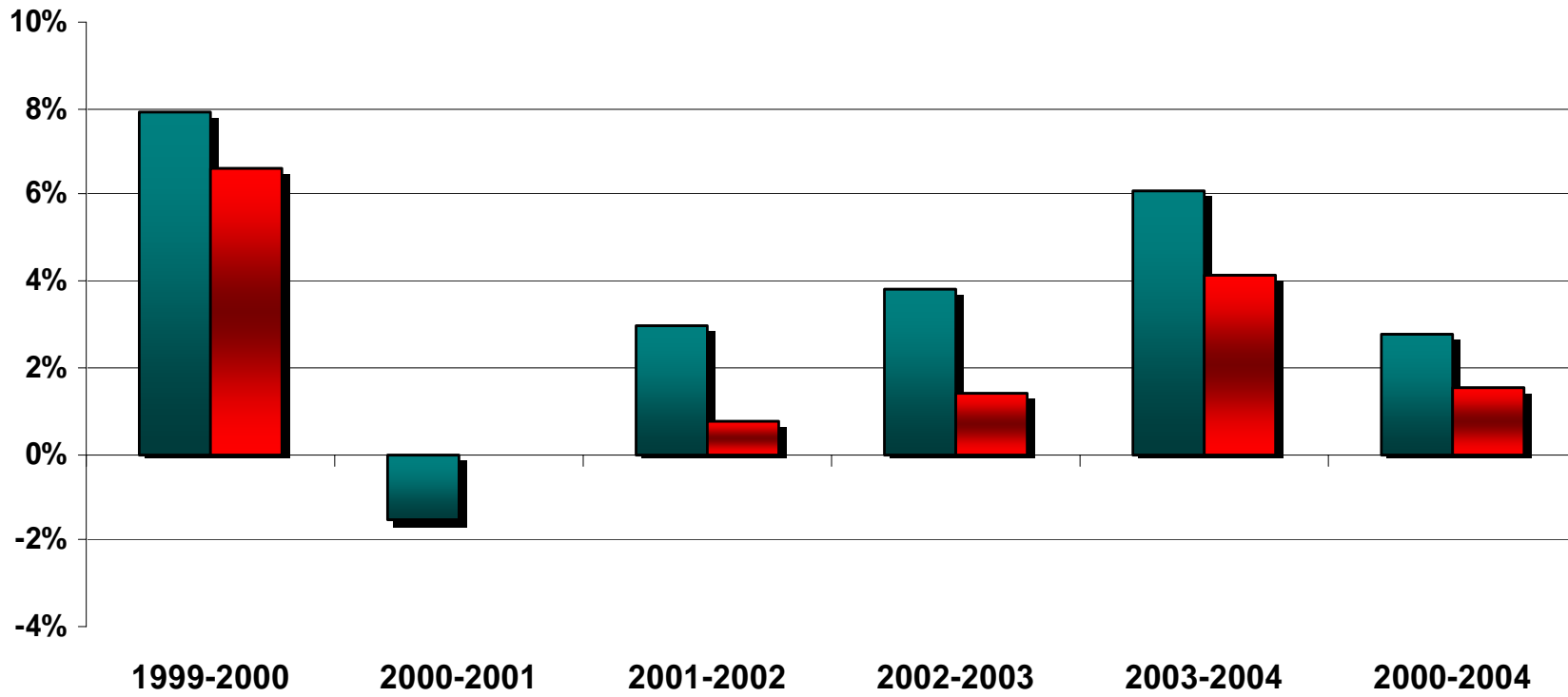


GROSS REGIONAL PRODUCT



GDP: MEXICO AND TEXAS BORDER STATES
(Real Percentage Change)

■ *Regional* ■ *National*

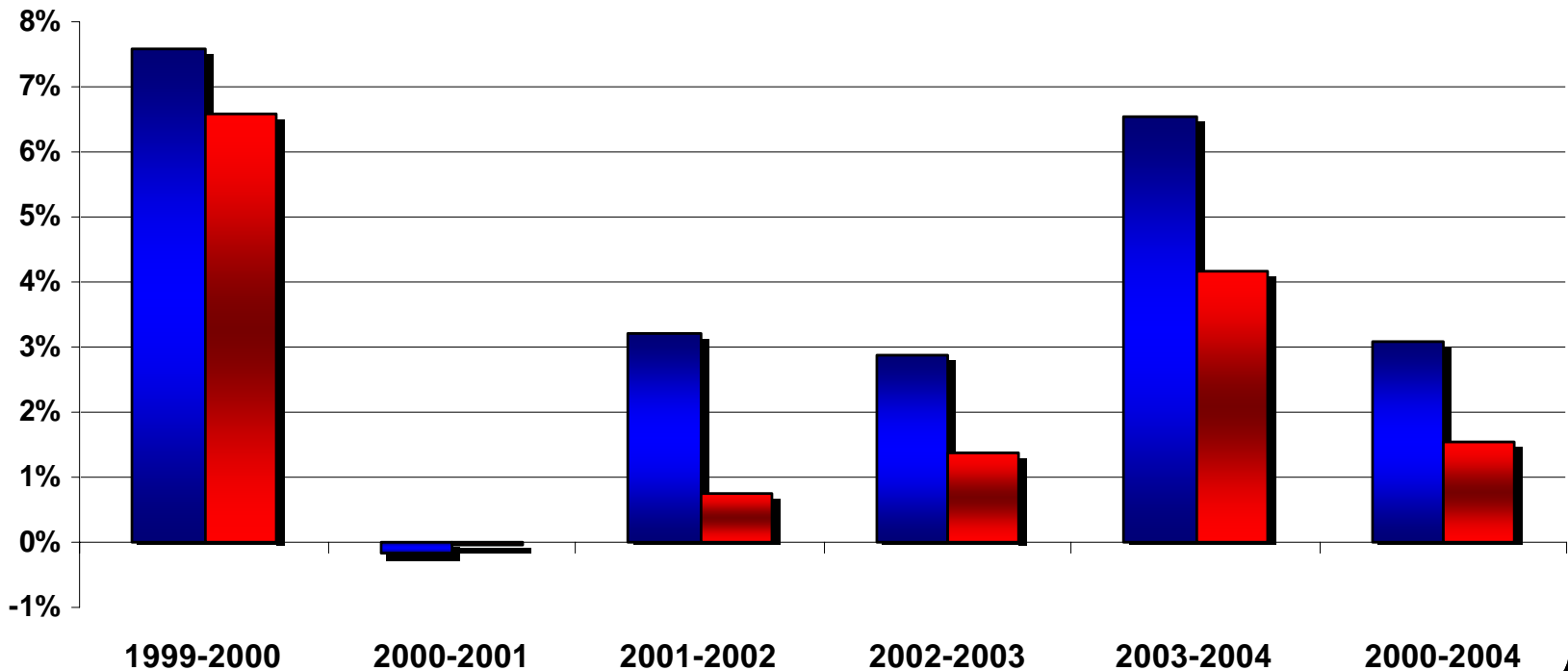


GROSS REGIONAL PRODUCT



GDP: MEXICO AND TEXAS BORDER STATES
(Real Percentage Change)

■ *Nuevo León* ■ *National*



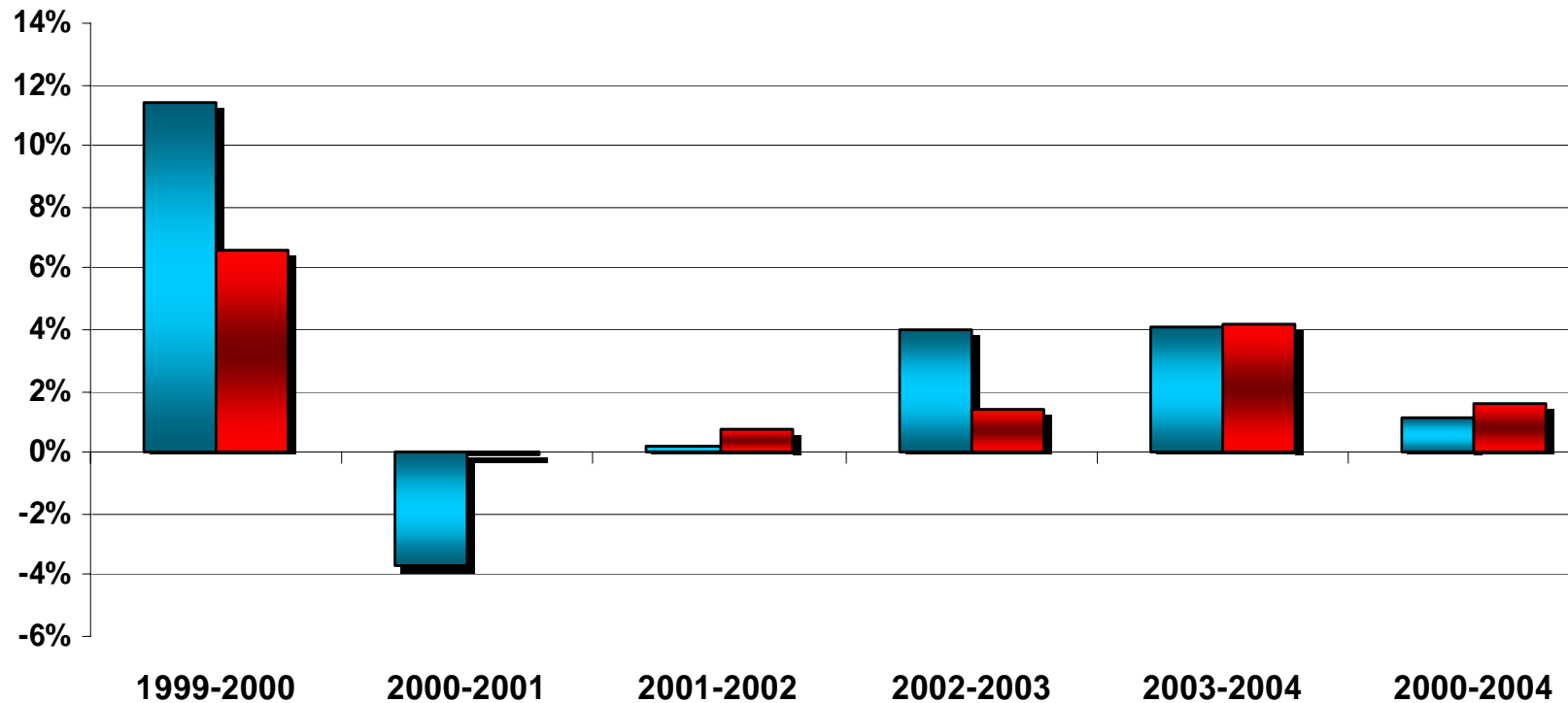
GROSS REGIONAL PRODUCT



GDP: MEXICO AND TEXAS BORDER STATES
(Real Percentage Change)

■ Chihuahua

■ National



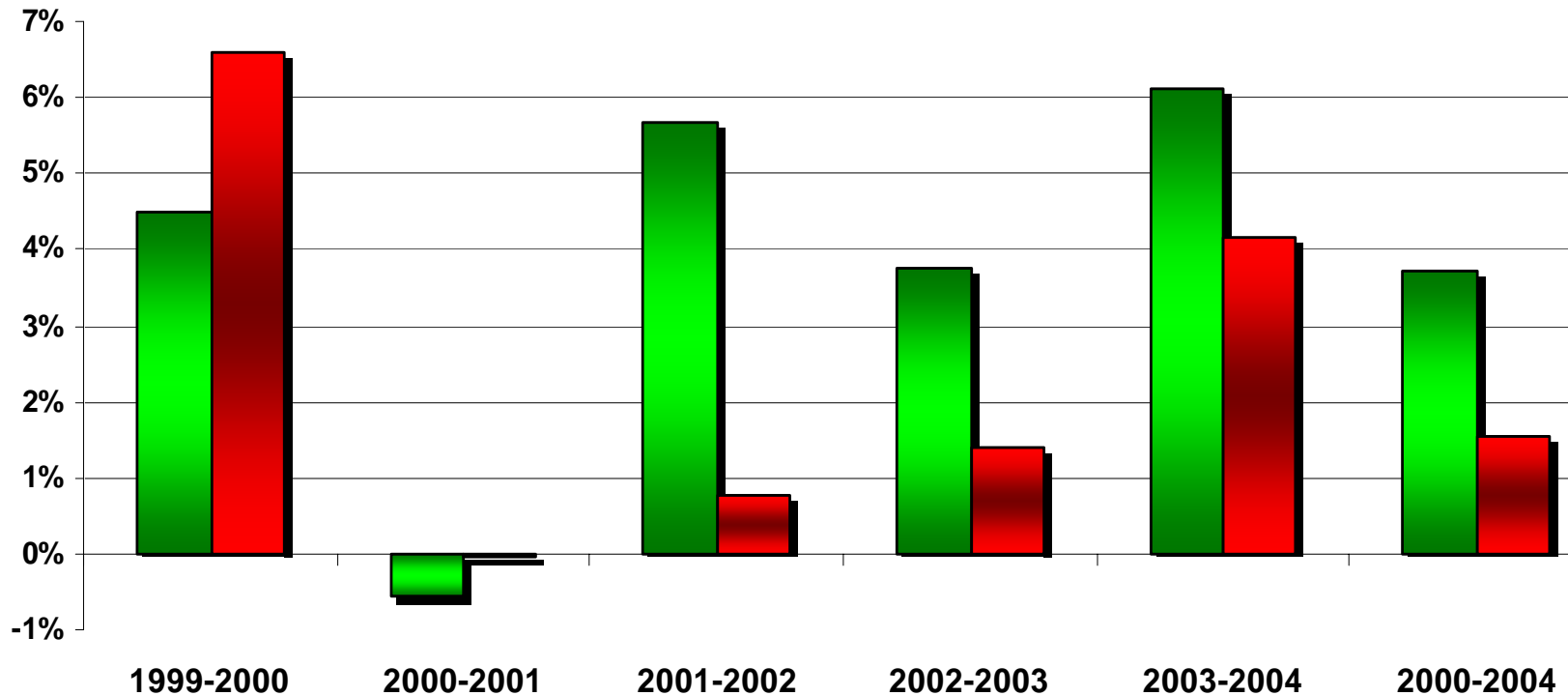
GROSS REGIONAL PRODUCT



GDP: MEXICO AND TEXAS BORDER STATES
(Real Percentage Change)

■ Coahuila

■ National



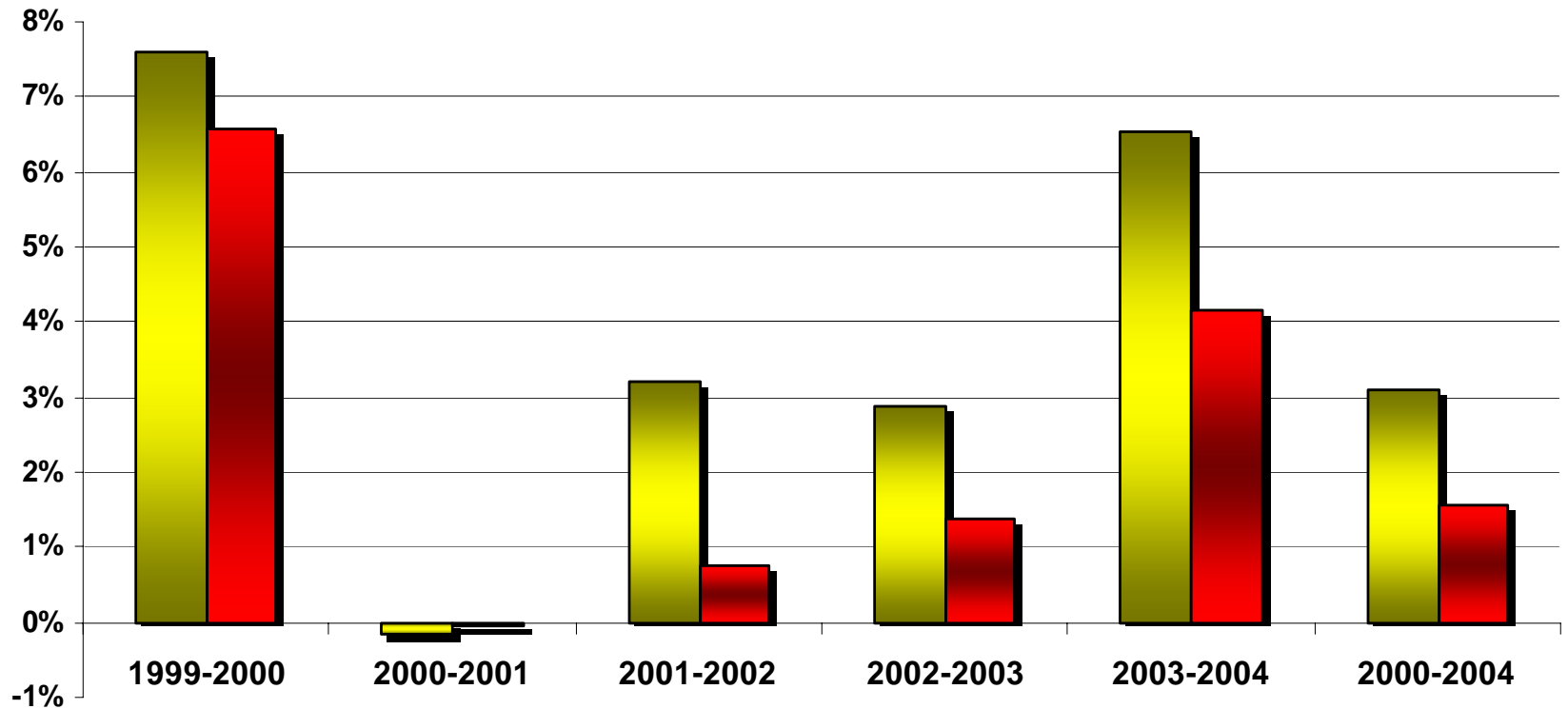
GROSS REGIONAL PRODUCT



GDP GROWTH: MEXICO AND TAMAULIPAS
(Real Percentage Change)

■ Tamaulipas

■ National



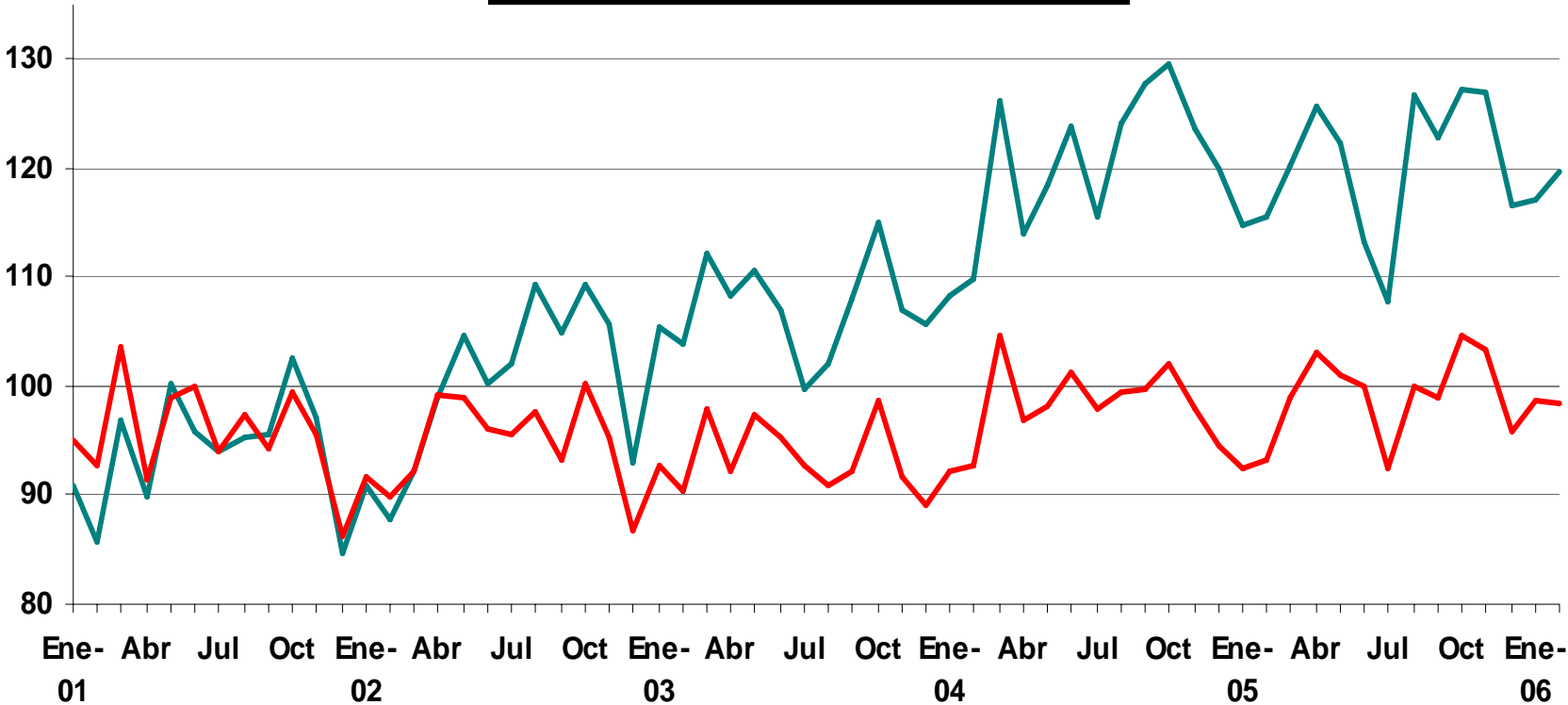
MANUFACTURING OUTPUT



TEXAS BORDER STATES MANUFACTURING OUTPUT

(2000 = 100)

— FRONT TEXAS — NACIONAL



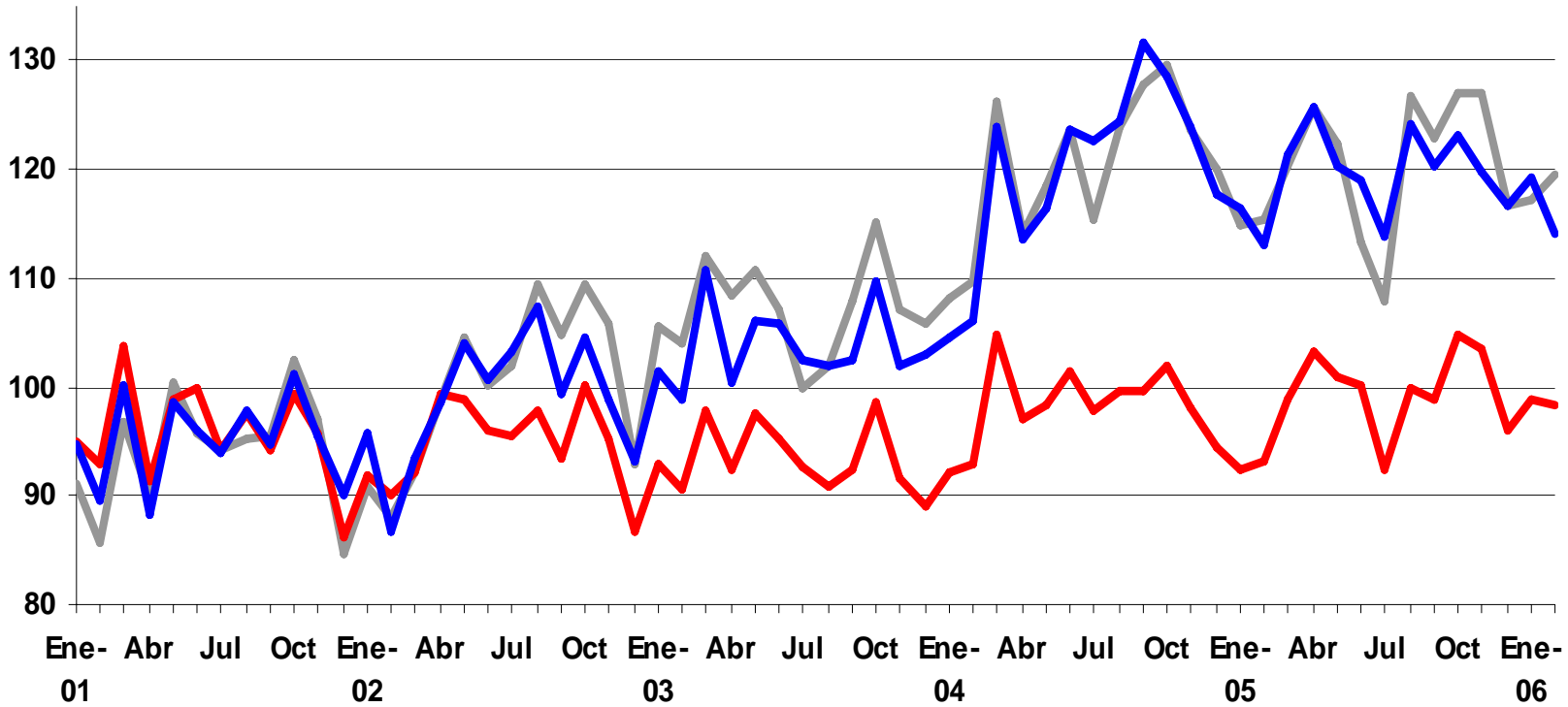
MANUFACTURING OUTPUT



TEXAS BORDER STATES MANUFACTURING OUTPUT

(2000 = 100)

— FRONT TEXAS — NACIONAL — NUEVO LEON

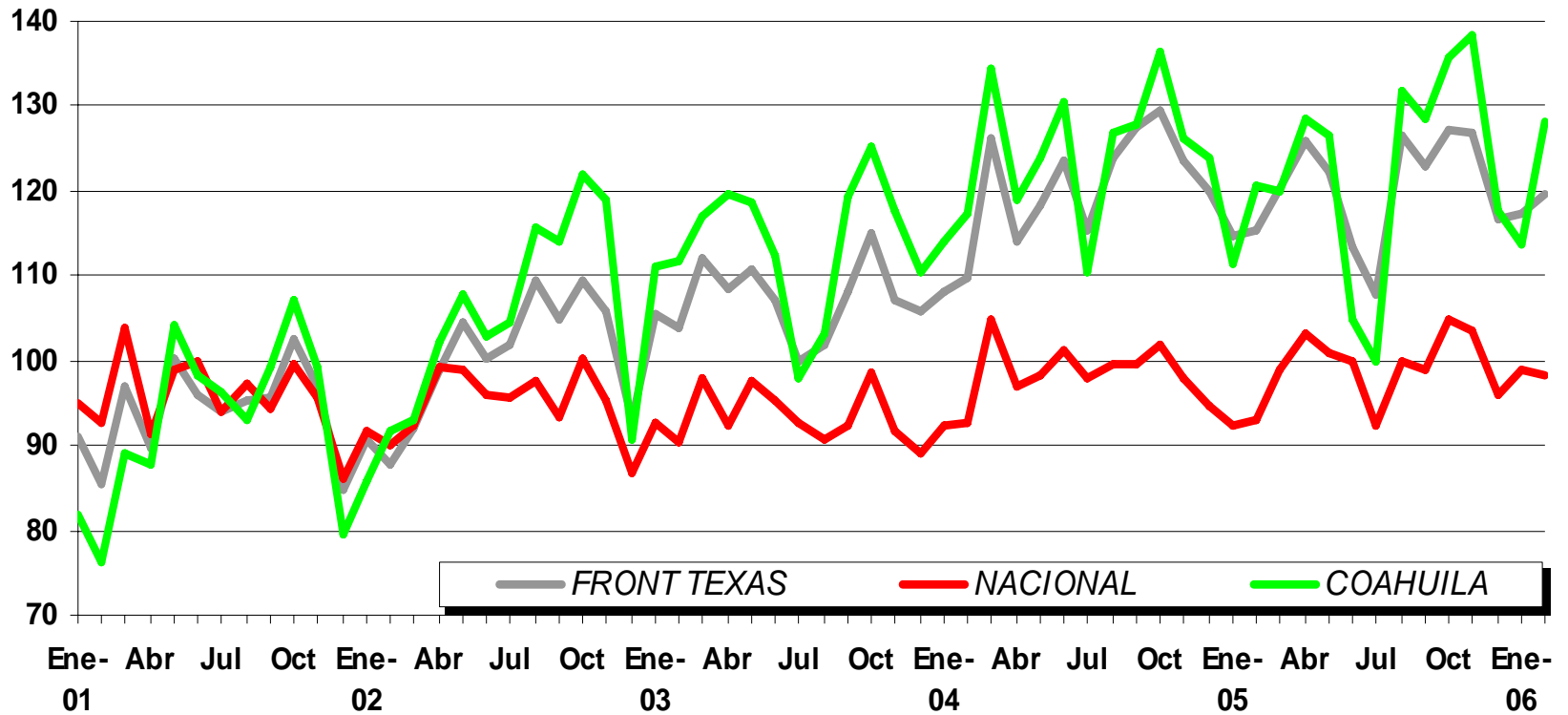


MANUFACTURING OUTPUT



TEXAS BORDER STATES MANUFACTURING OUTPUT

(2000 = 100)



MANUFACTURING OUTPUT



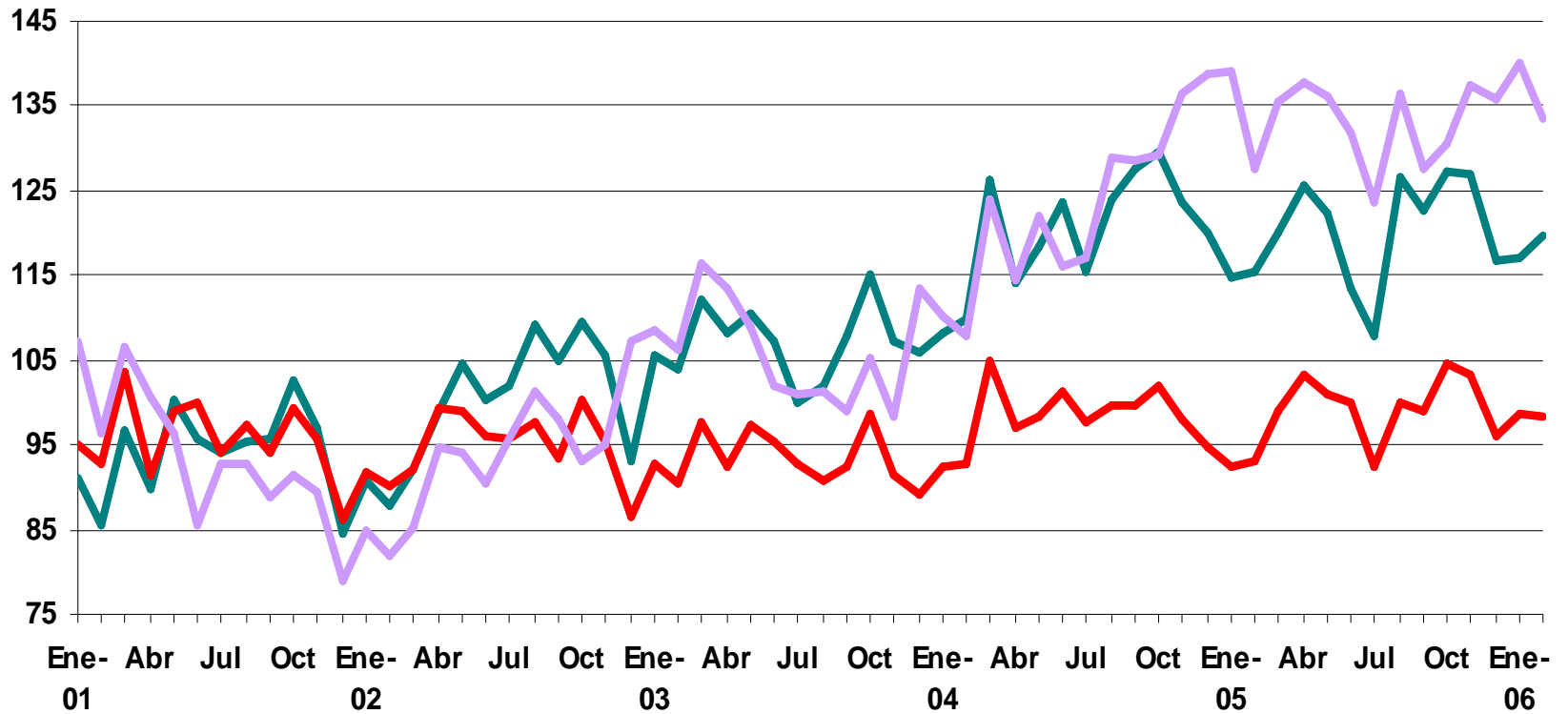
TEXAS BORDER STATES MANUFACTURING OUTPUT

(2000 = 100)

FRONT TEXAS

NACIONAL

TAMAULIPAS



MANUFACTURING OUTPUT



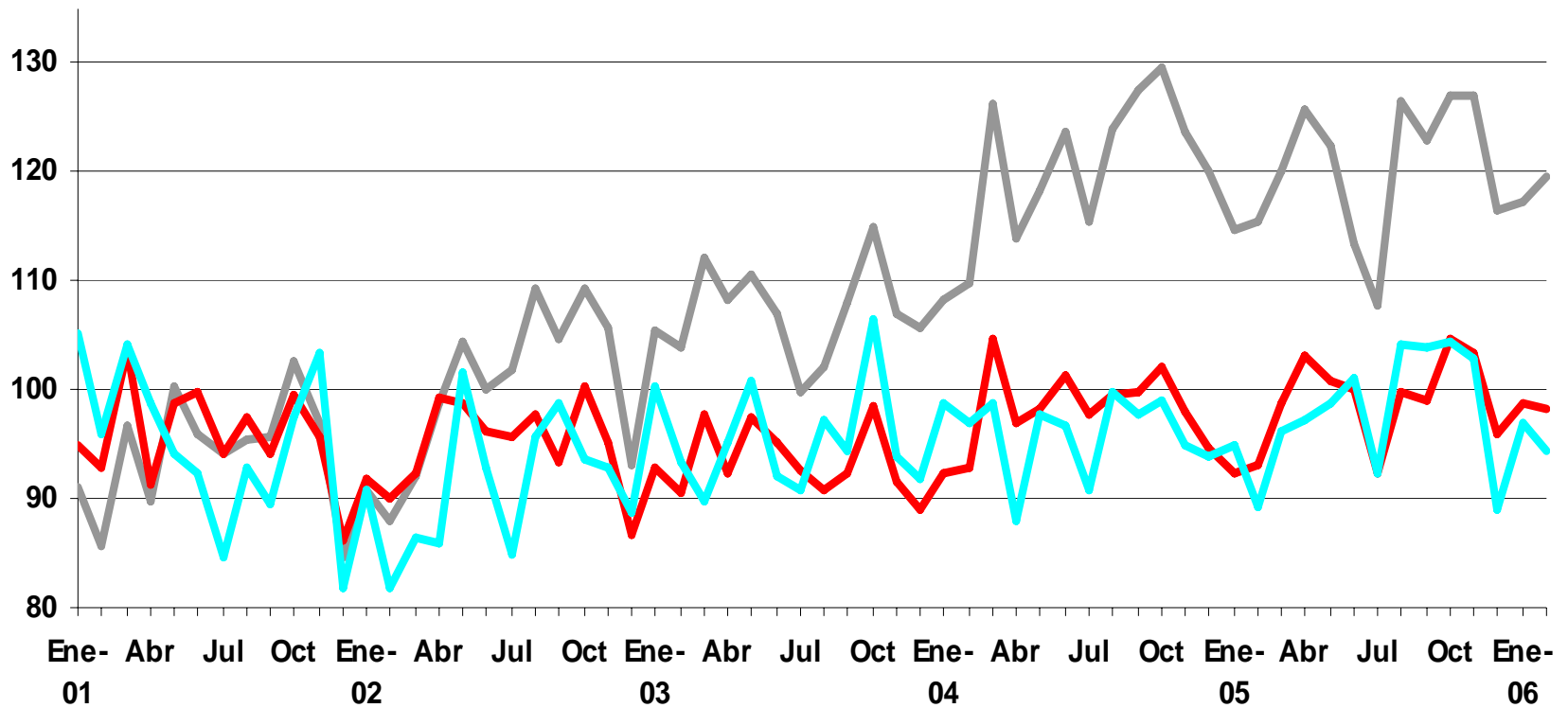
TEXAS BORDER STATES MANUFACTURING OUTPUT

(2000 = 100)

— FRONT TEXAS

— NACIONAL

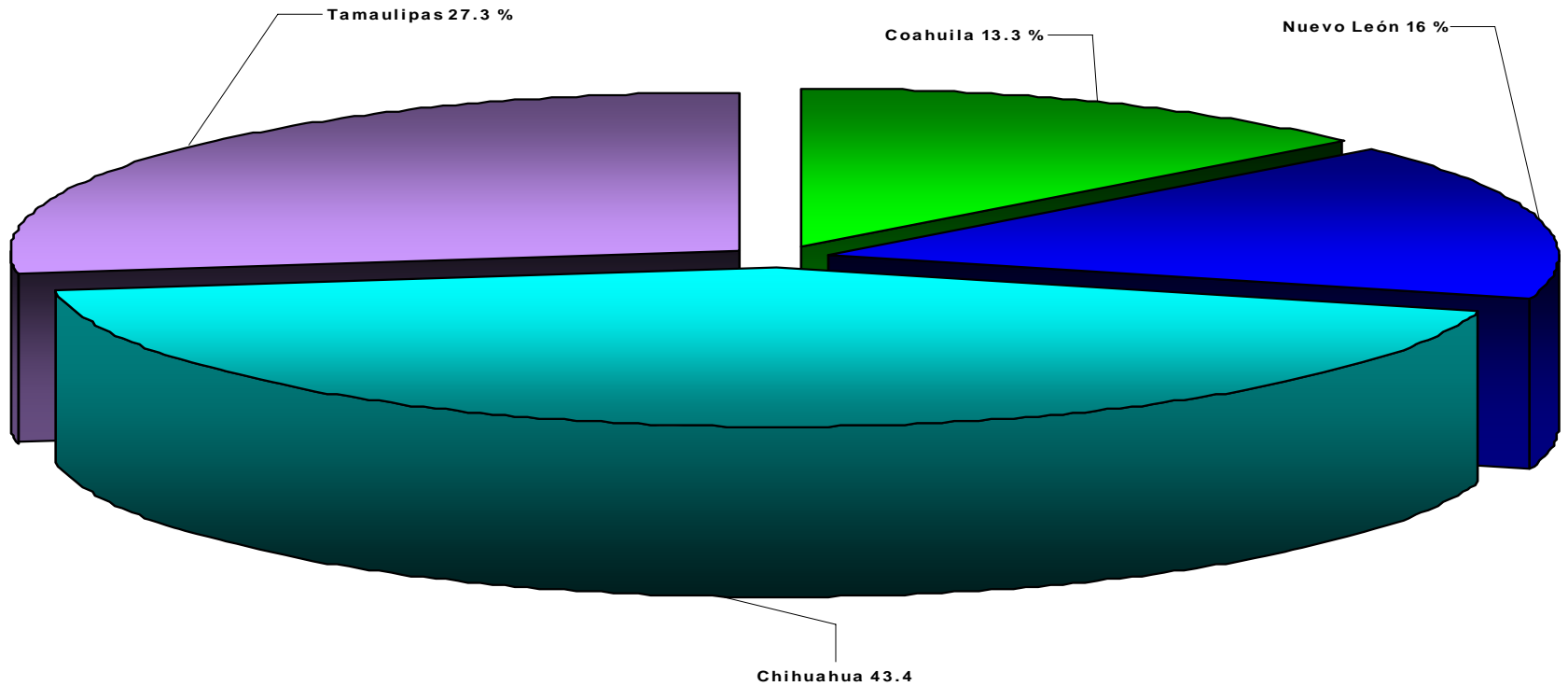
— CHIHUAHUA



MAQUILADORA INDUSTRY



TEXAS BORDER STATES MAQUILADORA INDUSTRY *(Regional Distribution)*



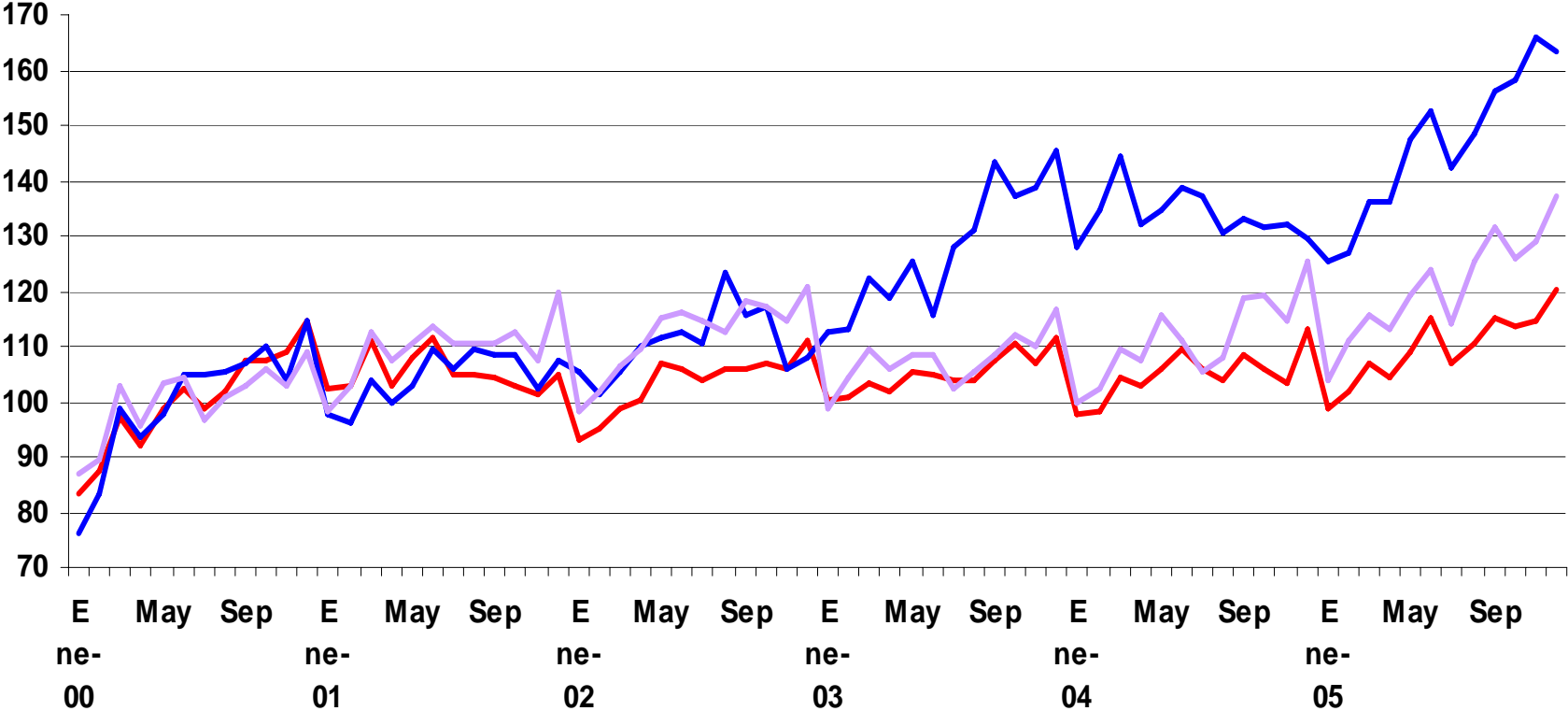
MAQUILADORA INDUSTRY



TEXAS BORDER STATES MAQUILADORA VALUE ADDED

(2000=100)

— National
 — Nuevo León
 — Tamaulipas



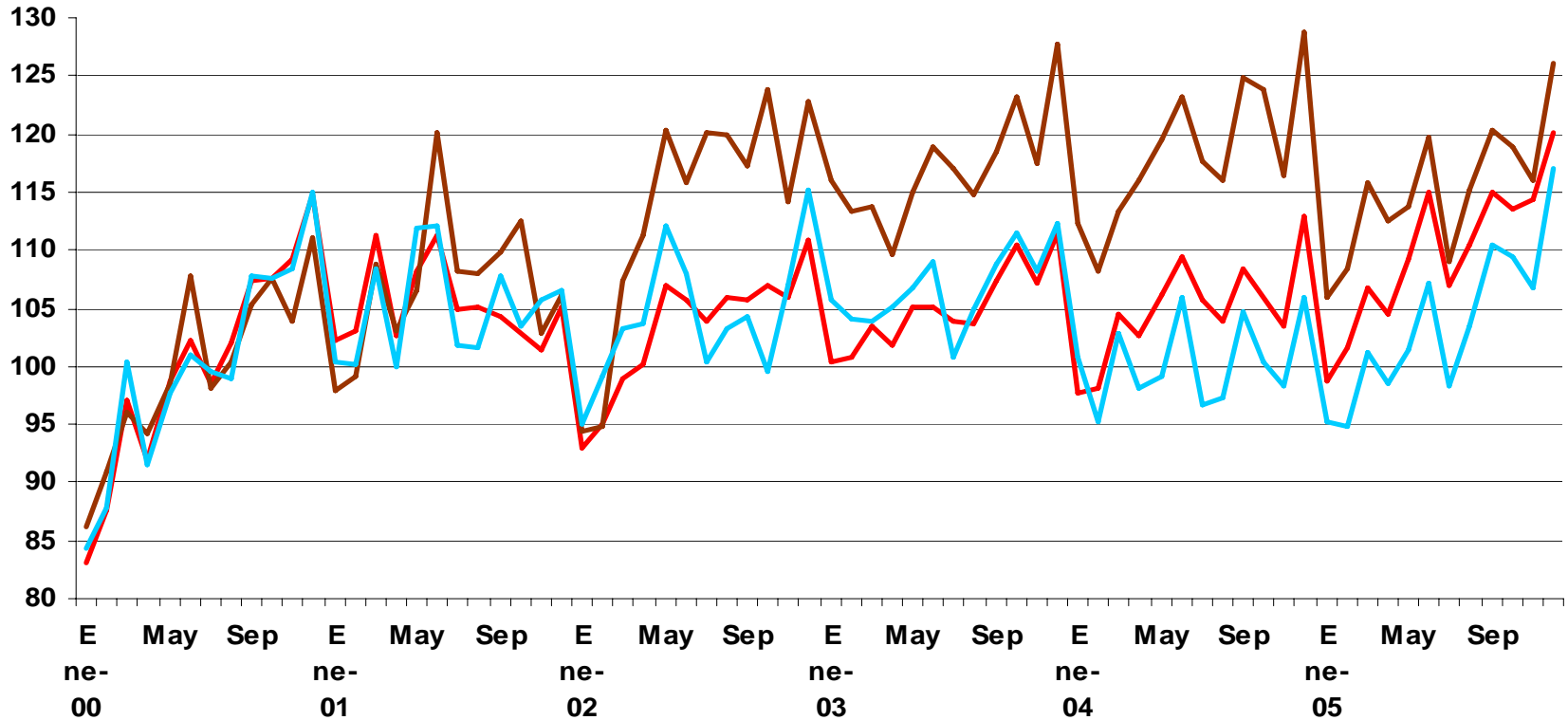
MAQUILADORA INDUSTRY



TEXAS BORDER STATES MAQUILADORA VALUE ADDED

(2000 = 100)

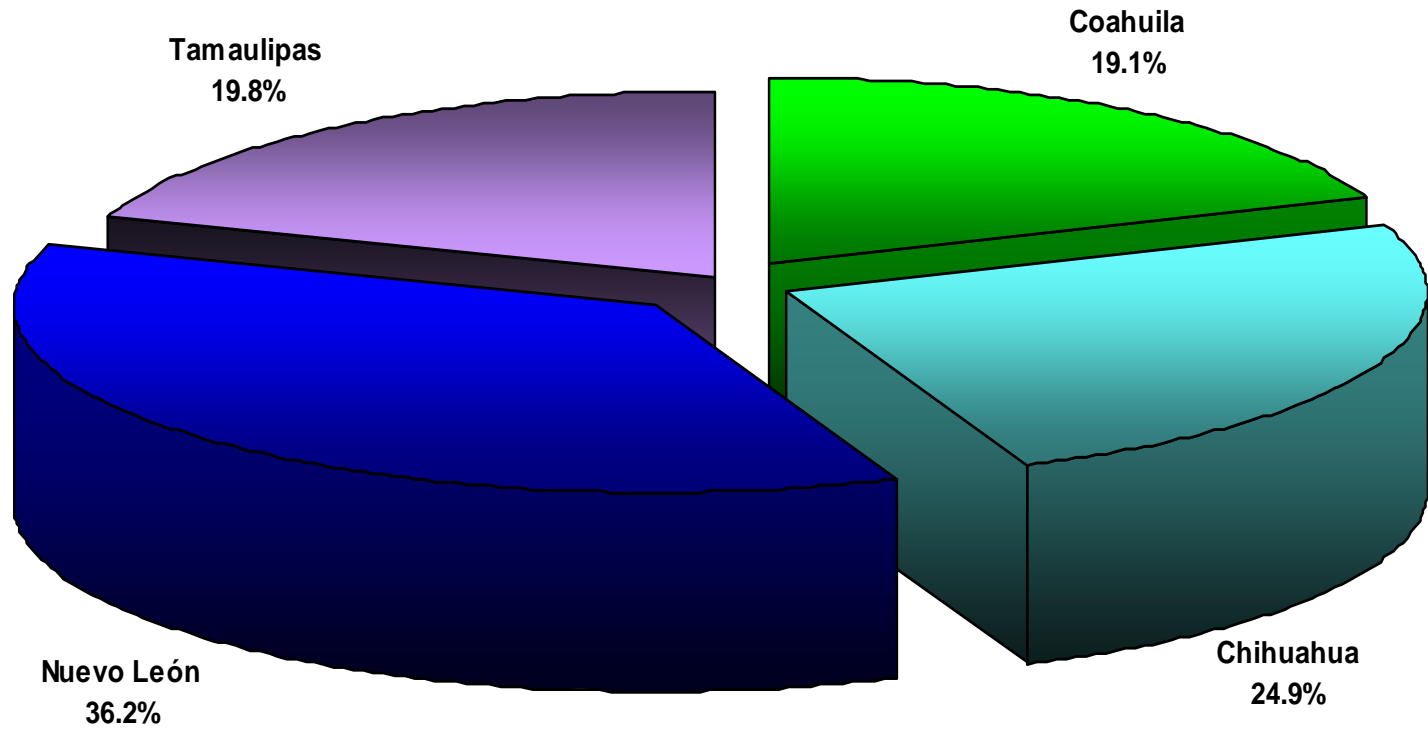
Nacional Coahuila Chihuahua



EMPLOYMENT



**TEXAS BORDER STATES DISTRIBUTION OF EMPLOYMENT
2006**



EMPLOYMENT



Period	Coahuila	Chihuahua	Nuevo León	Tamaulipas	Texas Border States	National	
	(19.08)	(24.93)	(36.20)	(19.79)			
2000	519,132	719,461	938,193	525,822	2,702,607	12,464,322	
2001	504,065	676,638	930,218	521,978	2,632,899	12,391,860	
2002	496,578	631,767	929,741	507,186	2,565,271	12,263,024	
2003	483,235	611,299	933,707	496,244	2,524,484	12,251,708	
2004	486,658	620,064	950,098	510,506	2,567,326	12,471,696	
2005	497,449	644,180	985,861	537,167	2,664,658	12,912,184	
Average (2000-2005)	497,853	650,568	944,636	516,484	2,609,541	12,459,132	
2001 (Jan-Mar)	518,285	712,863	942,366	532,850	2,706,365	12,559,232	
2002 (Jan-Mar)	491,247	636,379	919,652	509,039	2,556,316	12,203,211	
2003 (Jan-Mar)	492,321	616,479	935,944	500,703	2,545,448	12,283,046	
2004 (Jan-Mar)	481,435	616,761	940,406	500,738	2,539,341	12,346,545	
2005 (Jan-Mar)	481,435	616,761	940,406	500,738	2,539,341	12,346,545	
2006 (Jan-Mar)	493,478	628,867	967,313	526,939	2,616,597	12,691,177	
Change in Number of Workers	2006 (Jan-Mar) vs. 2005 (Jan-Mar)	12,043	12,106	26,907	26,201	77,256	344,632
Percent Change	2006 (Jan-Mar) vs. 2005 (Jan-Mar)	2.50	1.96	2.86	5.23	3.04	2.79

Source: IMSS.



THANK YOU

**COMMENTS, QUESTIONS
AND INFORMATION REQUESTS:**

**Delegación regional del Banco de México
en Monterrey.**

**Edificio KALOS
Zaragoza 1300 sur, Nivel A3, despacho No.
345**

PHONES: 8342-1490 & 8342-1967

[agdelrio\(a\)banxico.org.mx](mailto:agdelrio@banxico.org.mx)