



DATA-DRIVEN STRATEGIES TO CONNECT THE UNCONNECTED

EducationSuperHighway

October 9, 2024

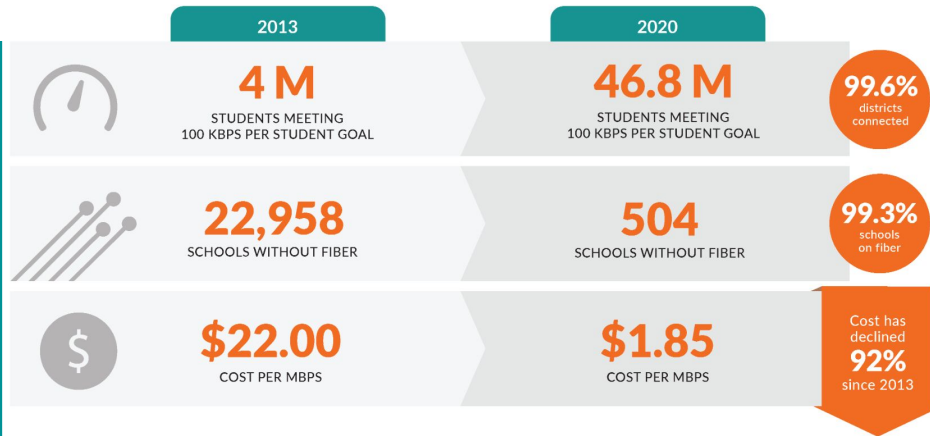


MISSION ACCOMPLISHED

Closing the Classroom Connectivity Gap

MISSION
ACCOMPLISHED:

The classroom
connectivity gap is
now closed



IMPACT ON TEACHING AND LEARNING



94%

of schools report digital
learning is happening in at least
half their classrooms

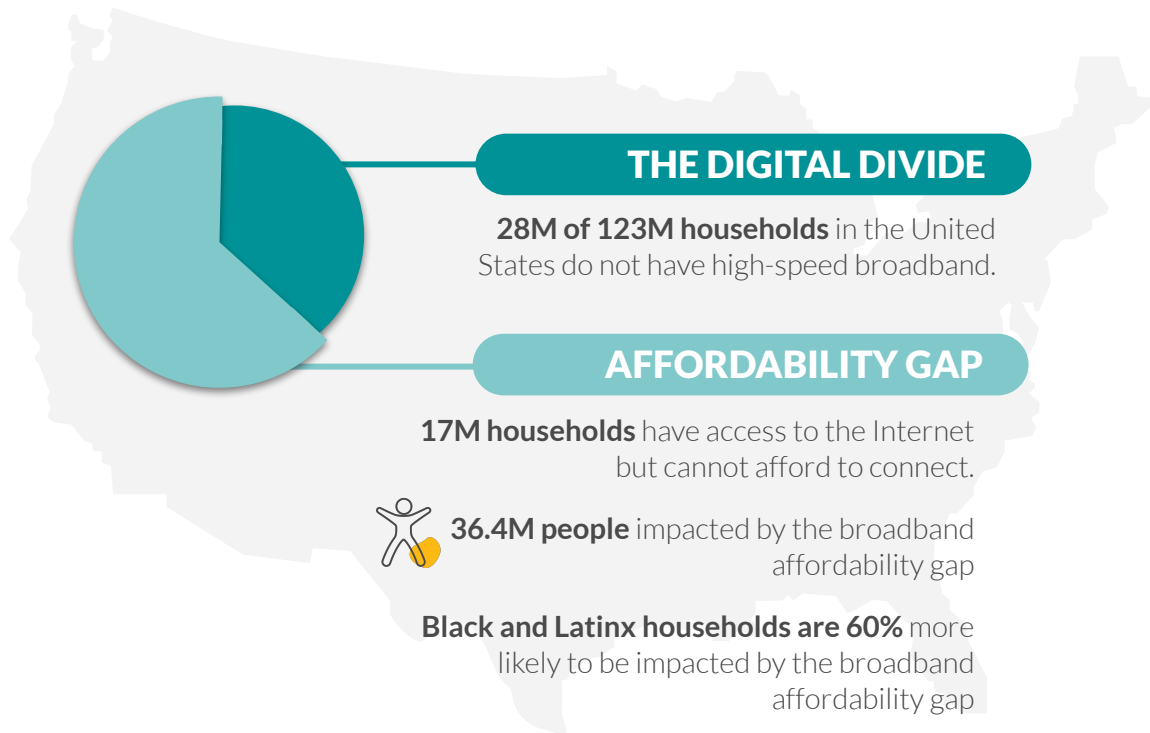
96%

of school leaders believe that digital
learning has a positive impact on instructor
effectiveness and student outcomes



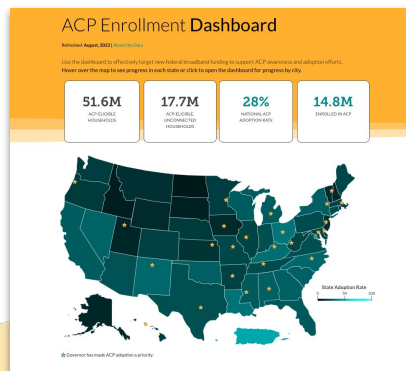
ESH 2.0 MISSION

Close the Digital Divide for the **17M Households** that have Access to the Internet but can't Afford to Connect



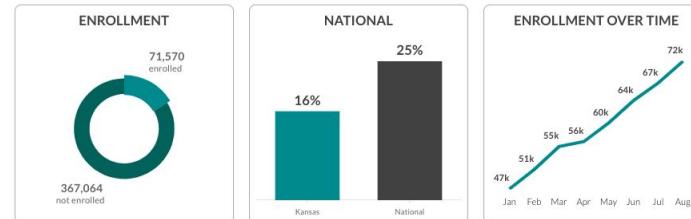
ACP Enrollment Dashboard

Provides the most up-to-date data on the number of ACP-eligible households, the number that have enrolled, and the number that still lack a high-speed home connection.



Kansas ACP Adoption

438,634 eligible households



Kansas Governor — Laura Kelly



Access to high-speed internet in today's economy isn't a luxury – it's a necessity. The Affordable Connectivity Program breaks down barriers to a tool that can change outcomes for rural and urban regions alike – something that's essential as Kansas continues to work toward being a top 10 state for broadband access by 2030.

FILTERS

DOWNLOAD

Data By City

	ADOPTION RATE	ELIGIBLE HOUSEHOLDS	ENROLLED HOUSEHOLDS	ELIGIBLE UNCONNECTED HOUSEHOLDS
Abbyville	17%	17	3	6
Abilene	14%	1097	148	467
Admire	7%	26	2	11
Agenda	< 1%	17	1	7
Agra	< 1%	59	1	20

Tools and Resources for Driving ACP Awareness

Barrier

Awareness & Trust

ACP Act Now

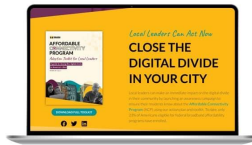
Statewide Awareness



A state-led ACP awareness campaign in partnership with local communities, trusted institutions and EducationSuperHighway.

ACP Toolkit

For Local Leaders



Activate trusted partners at the local level to launch awareness campaigns through paid and owned marketing and communications channels

PromoteACP

Resource Hub



Customizable marketing materials to increase awareness of the Affordable Connectivity Program and support enrollment. Available in 14 languages.

Tools and Resources for Driving ACP Enrollment

Barrier Enrollment

GetACP

Pre-enrollment Tool



“TurboTax for ACP” web app that

1. streamlines the enrollment process
2. helps users secure documentation, and
3. Identifies “free with ACP” ISP plans

ChatACP

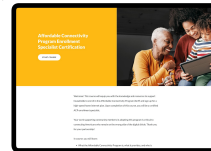
Contact Center



Multi-lingual, on-demand support via live chat, or connect with an ACP enrollment specialist to apply with assistance or receive a call back.

LearnACP

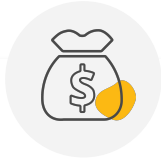
ACP Certification



Provide 1:1 enrollment support through a contact center and trained local partners for 20% of applicants

1. Answer application questions
2. Help applicants obtain documents
3. Troubleshoot stalled applications

Barriers to Internet Adoption



AFFORDABILITY

Residential broadband service typically costs \$70 per month or more plus installation and equipment costs.



ENROLLMENT

Difficult ISP sign up processes including extensive documentation requirements, long hold times, long term contracts, and lack of language support.



LACK OF OPTIONS

ISPs have not focused on the affordable multifamily housing segment due to high acquisition costs, high customer churn rates, and customer credit issues.



WHAT IS APARTMENT WI-FI?

Apartment Wi-Fi is modeled after the way Wi-Fi is delivered in most hotels.

The hotel buys a single internet circuit from an internet service provider (ISP) and engages a managed service provider (MSP) to deploy and manage the Wi-Fi Network.



STEP 1

Procure a high speed fiber internet connection to the building



STEP 2

Install Wi-Fi access points efficiently to provide ubiquitous coverage



STEP 3

Provide residents with the SSID and password to connect to the internet



BEAD Non-Deployment Funds | **New Jersey**



PROGRAM DETAILS

Public Housing Authority Connect: Pilot Broadband Program



STATE FUNDING

New Jersey plans to allocate \$20 million from BEAD non-deployment funds towards a public housing broadband grant program to fund upgrades to inside wiring and equipment, including Wi-Fi in common areas and affordable broadband programs



FOCUS ON PUBLIC AND MULTI-FAMILY HOUSING COMMUNITIES

The program will fund unit-level connectivity solutions that will bring high-speed internet access to public housing residents



ELIGIBLE ENTITIES

Public Housing Authorities across the state

Digital Equity Plan | **Maine**



PROGRAM DETAILS

Affordable Housing Connectivity Program (AHCP)



STATE FUNDING

Maine plans to allocate \$2.5 million to expand free or low-cost connectivity (wired or Wi-Fi) for residents of affordable housing units, ensuring service to approximately 41,000 households in subsidized rentals



FOCUS ON AFFORDABLE HOUSING COMMUNITIES

The program will fund unit-level connectivity solutions to bring affordable high speed internet access to affordable housing residents via Apartment Wi-Fi and digital equity activities, digital skill training, affordable devices, technical support, and internet safety education



ELIGIBLE ENTITIES

Subsidized housing owners across the state

Considerations For Policy Makers, Practitioners, and Researchers



Policies for a Permanent Broadband Benefit

Long-term solution for unconnected and subscription-vulnerable households is necessary



Using Data To Inform Strategies, Not Just Results

Many nonprofits use data to measure their impact. At EducationSuperHighway, we used data to deliver that impact – to convince leaders to act, to drive policy changes, to design and implement strategies that work



Making Data Readily Available

Focusing on building tools to make your data and analysis easy to access and understand so that everyone at your organization and external stakeholders can use it.

