

Addressing Disparities in Broadband Access:

Opportunities for
Mission-Aligned
Projects

LSC

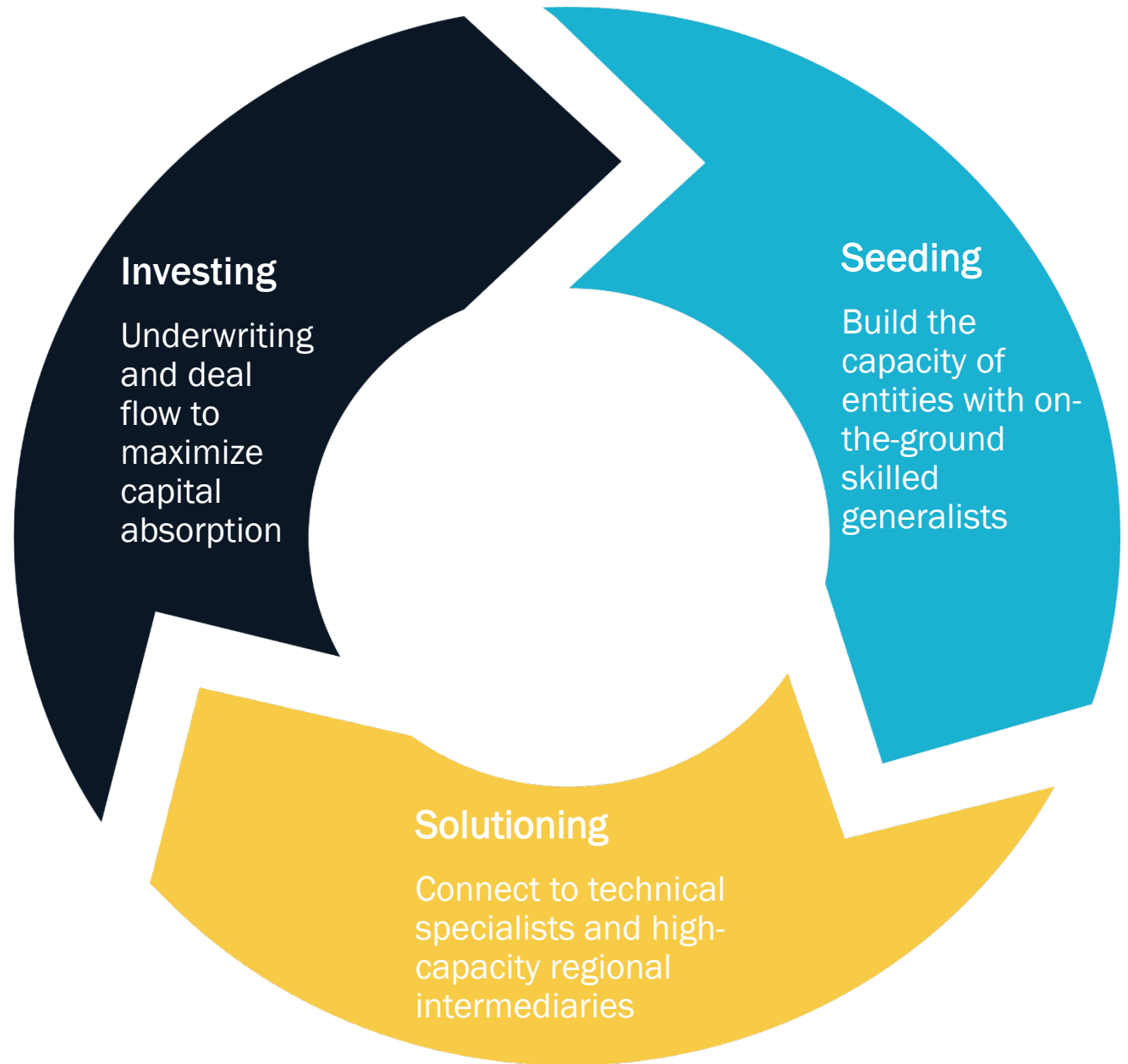


Research aim: Can mission-led technical assistance intermediaries help communities understand local broadband grant readiness?

A capacity-building framework can unlock investment potential for broadband



Targeted capital investments paired with capacity-building infusions equip ecosystems to attract and deploy inclusive, community-centered broadband infrastructure.

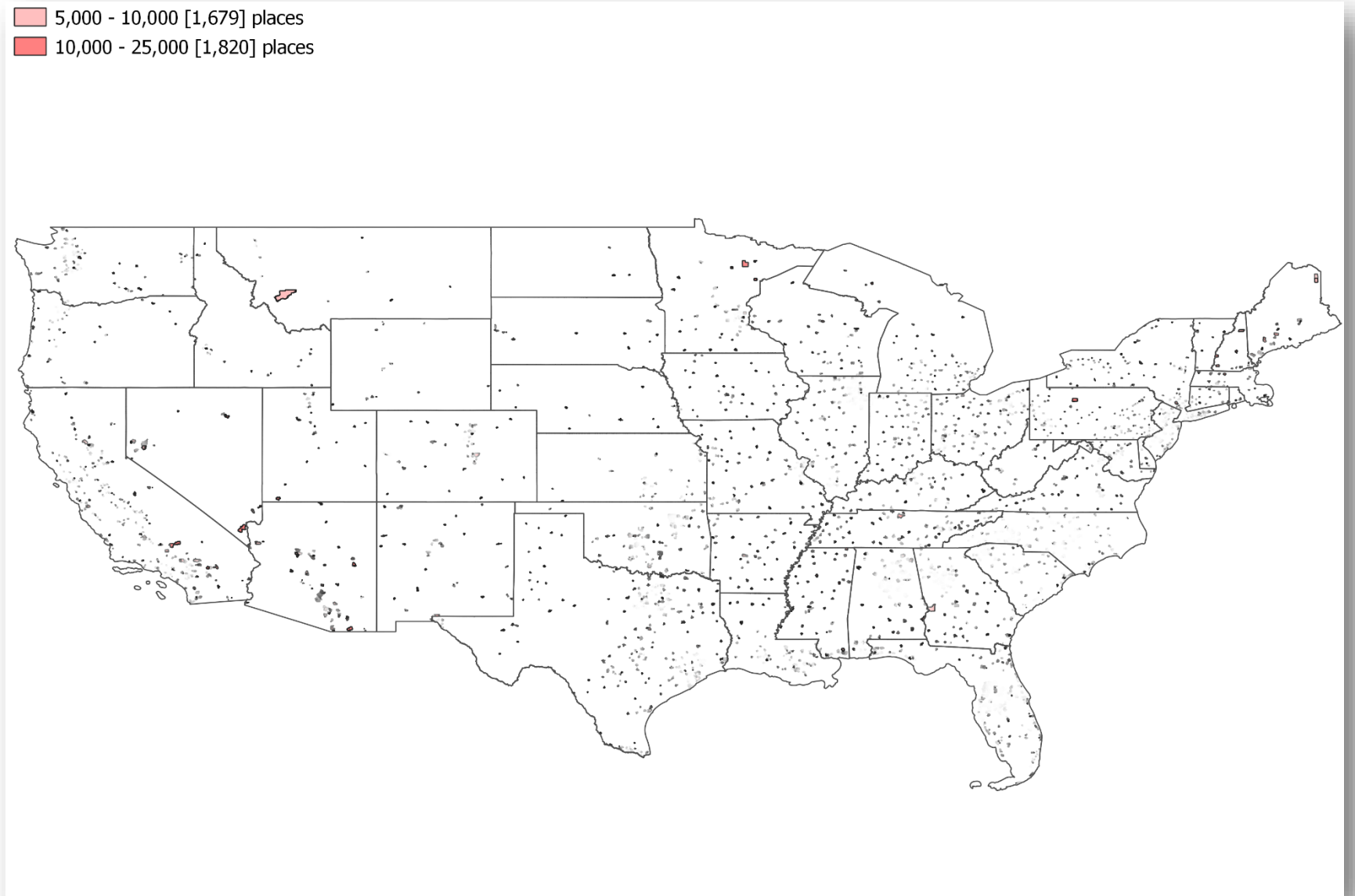


Research Observations

- Active federal funding programs like Broadband Equity Access and Deployment Program (BEAD) prioritize unserved areas, including remote places like farms, but planners will need to be more intentional to avoid missing economic hubs in rural counties and lower-income neighborhoods in inner cities.
- Thousands of operators serve small markets that overlap with mission-aligned investment priorities.
- Small communities with poor broadband often lag in digital literacy – an opportunity for mission-aligned investment.
- A network of technical assistance intermediaries is providing predevelopment feasibility assistance, resources, and financial support to projects.

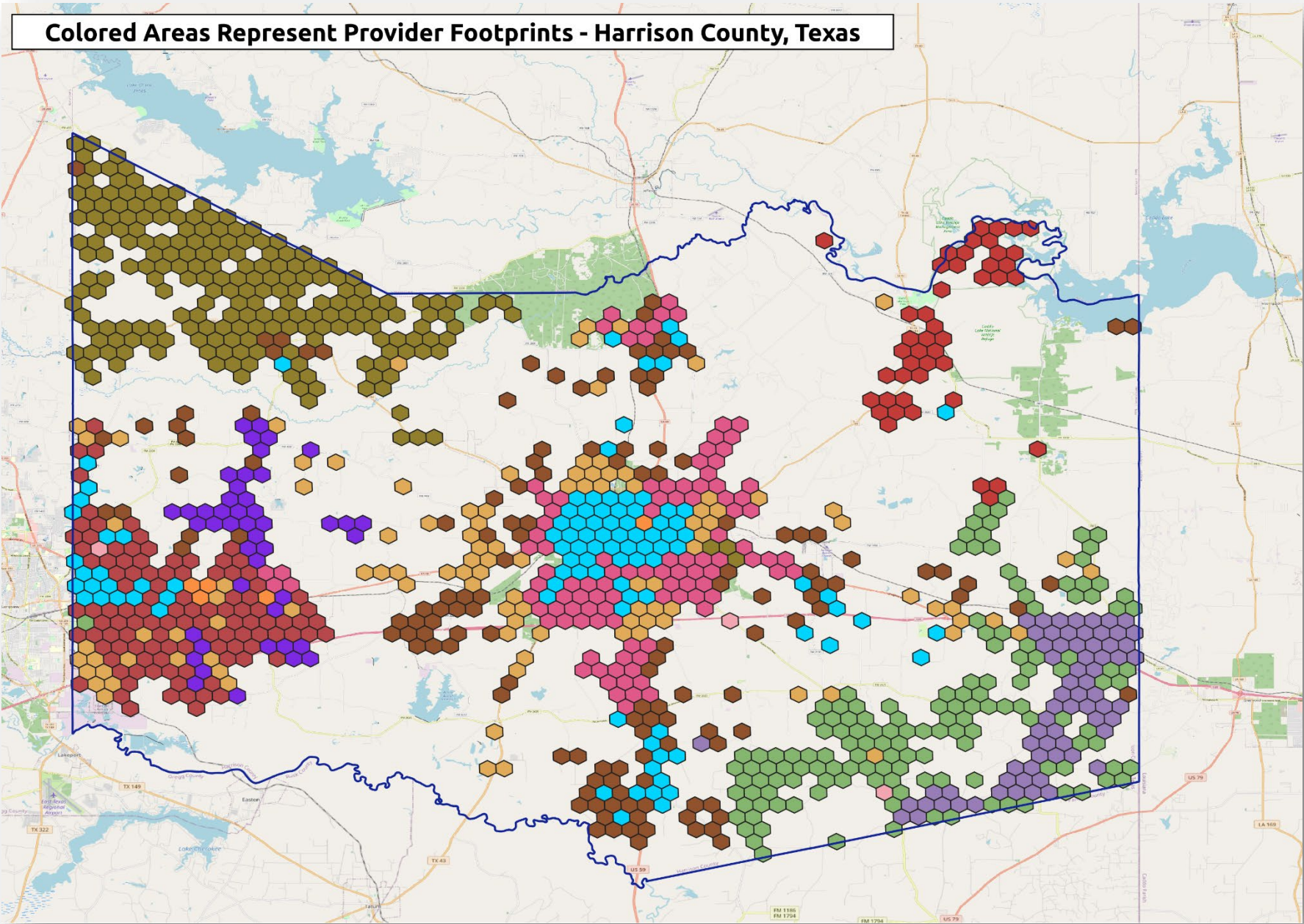
Geography of Opportunity

Across the nation, there is a high overlap of areas that need more or better broadband with the places mission-aligned actors typically invest resources.



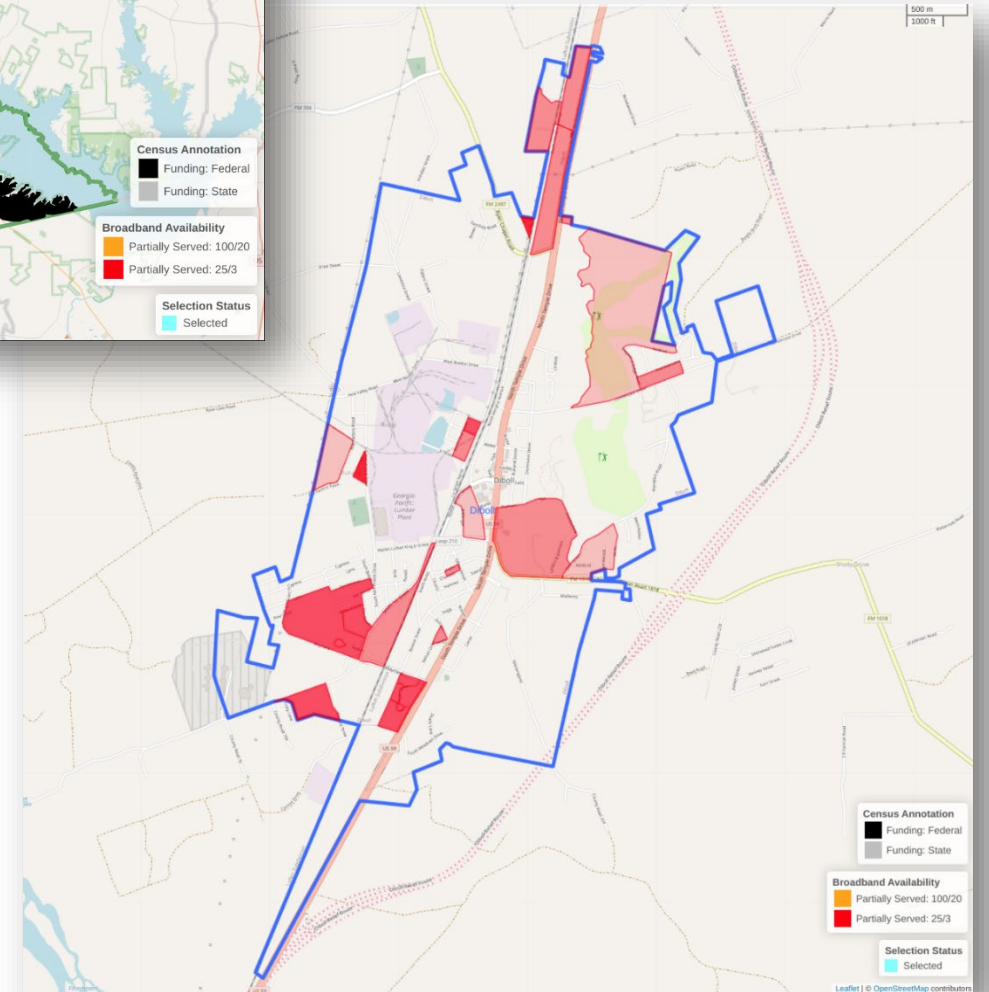
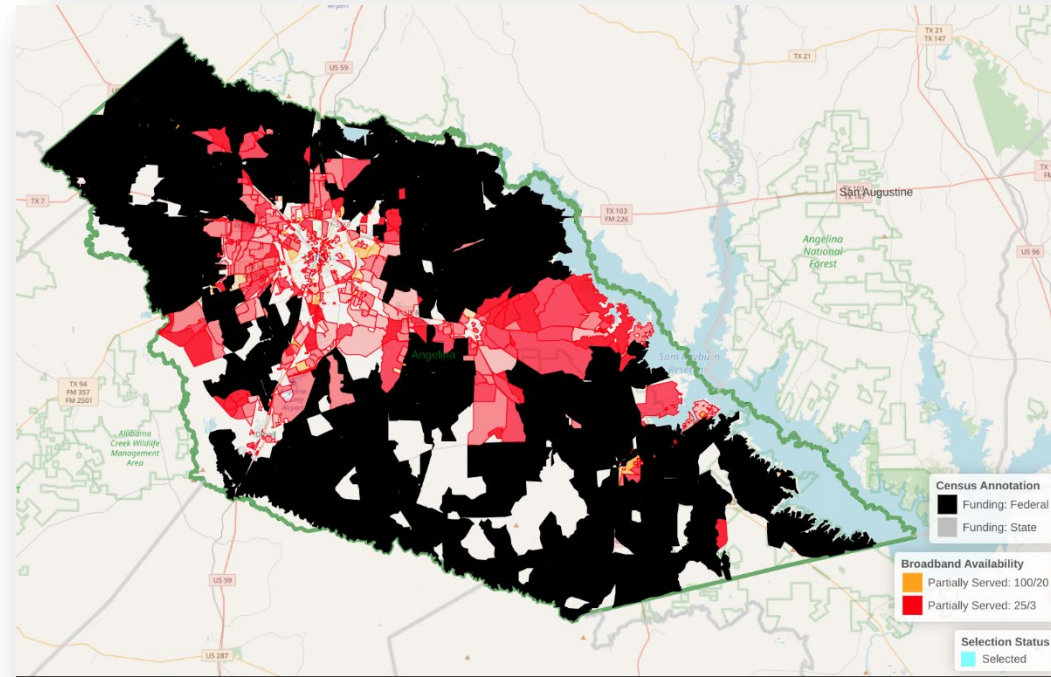
Geography of Opportunity

Harrison County, Texas



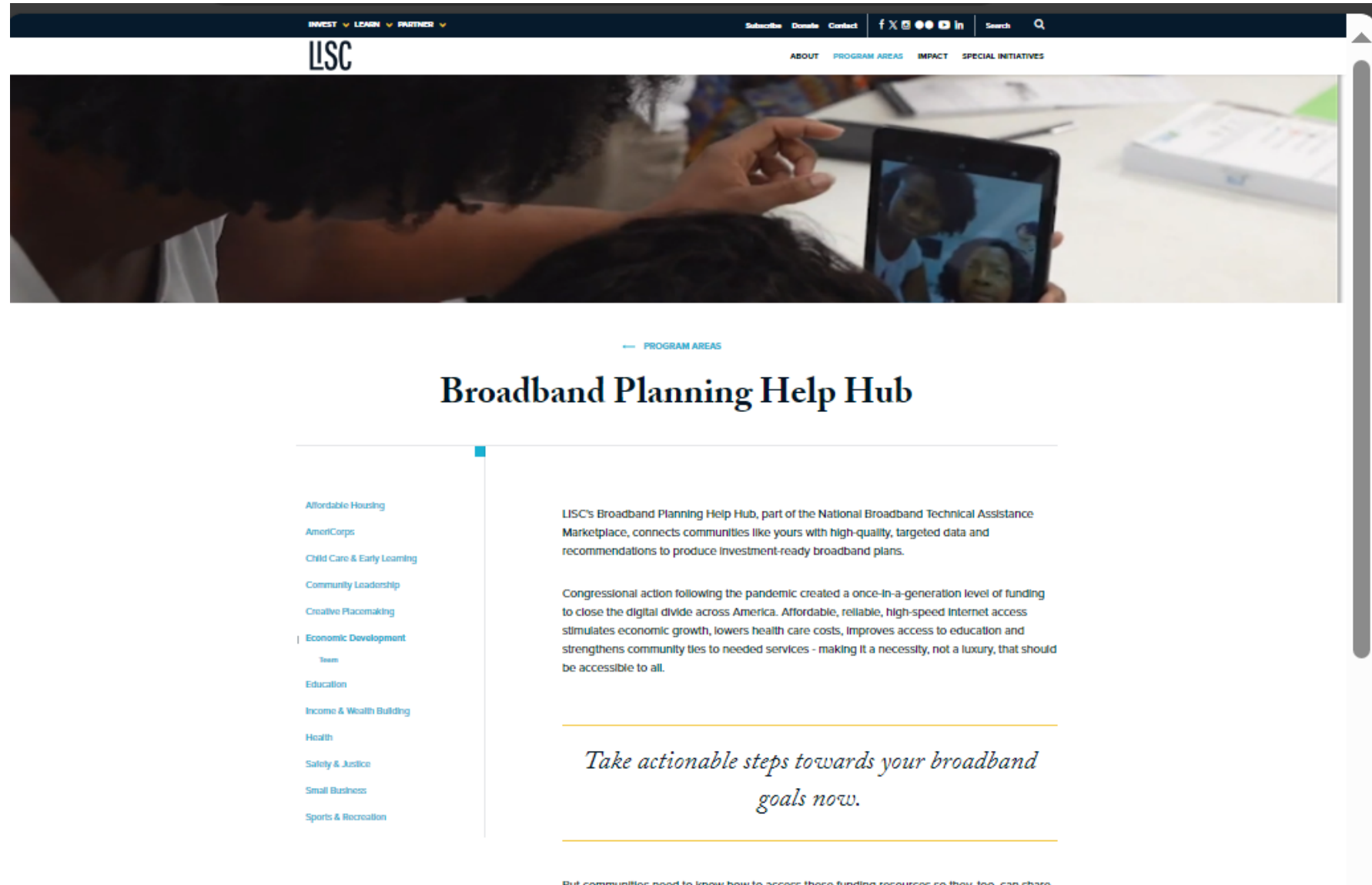
Geography of Opportunity

Diboll, Angelina County, Texas





National Broadband Technical Assistance Marketplace Launch



Christa Vinson
Director, Digital Equity &
Strategic Partnerships
Rural LISC

cvinson@lisc.org

