



# The

# Impact

# University



THE UNIVERSITY OF  
**CHICAGO**

**Derek R.B. Douglas**, VP for Civic Engagement  
**@DRBDouglas    @uchiengagement**





@DRBDouglas

@uchiengagement

“This University is here to help the people of Chicago, and especially those in position to receive the more definite character of aid we are able to render. We are here to assist teachers, students, businessmen and women, and particularly those whom circumstances have deprived of educational opportunities once eagerly sought.”

-- WILLIAM RAINEY HARPER

1<sup>st</sup> President of the University of Chicago, 1891-1906





Internally-Focused

@DRBDouglas

@uchiengagement

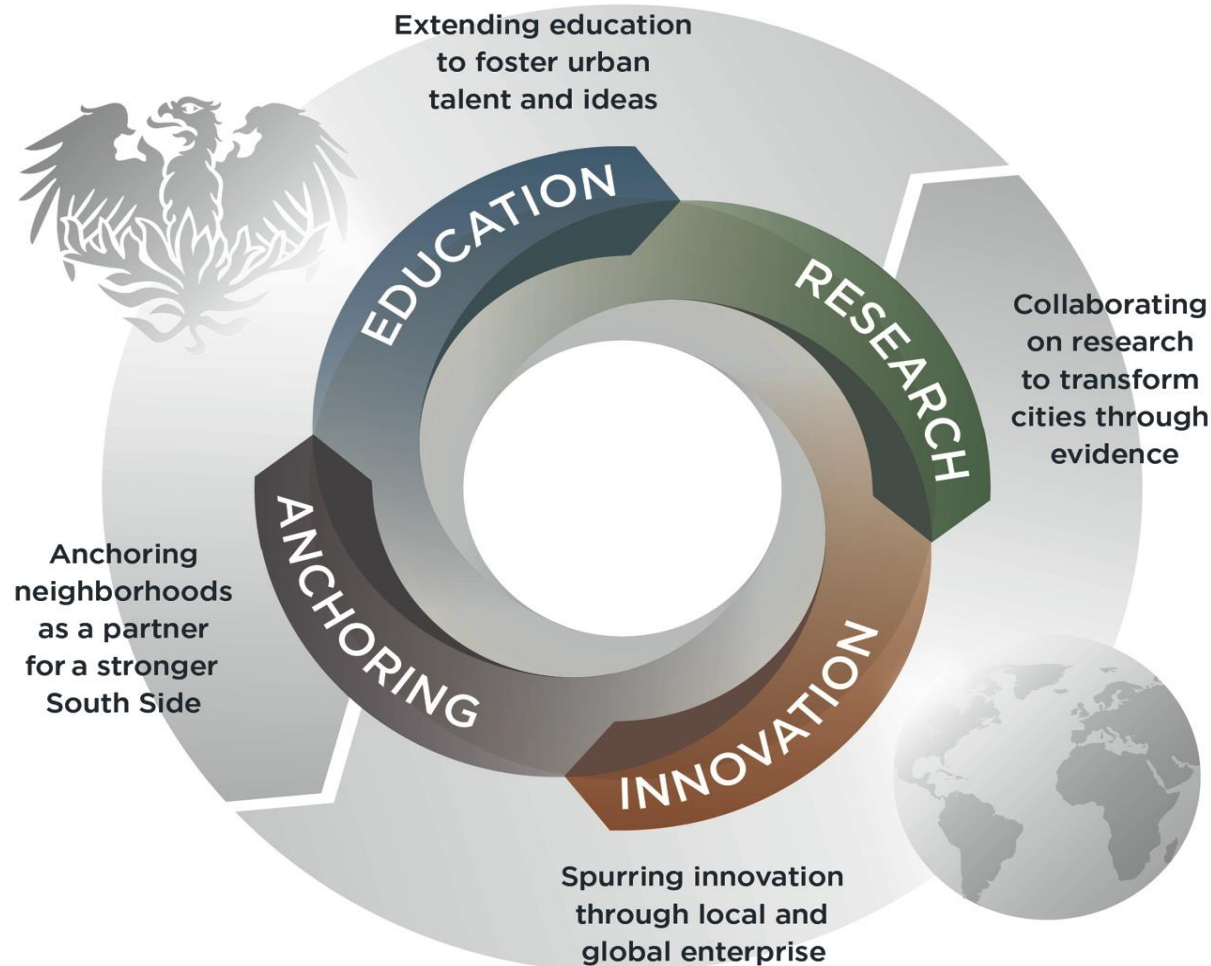
“The University of Chicago exists for the life of the mind. Its primary purpose is intellectual. It exists to increase the intellectual understanding and powers of mankind. The commitment is to the powers of reason.”

-- EDWARD H. LEVI

8<sup>th</sup> President of the University of Chicago, 1968-1975

## University of Chicago Model of Civic Engagement

**Our framework and approach** to engagement with our city and beyond seeks to leverage and advance the full range of our historic strengths as an educator, researcher, anchor, and innovator, *and* realize the power at the intersection of these four roles. This intentional and integrated model of engagement harnesses the creative energy and cross-disciplinary practices at the core of our institution, and has the potential to enable a level of impact not attainable through isolated efforts.





THE UNIVERSITY OF  
**CHICAGO**

Office of Civic  
Engagement

## MID-SOUTH SIDE

## CHICAGO

Black  
Residents

**81%**

**32%**

Home  
Ownership

**27%**

**45%**

Unemployment

**21%**

**13%**

Crime Rates

As high as  
**29 crimes**  
per 100 residents

An average of  
**11 crimes**  
per 100 residents

Vacant  
Property

**5%**  
(12% in Washington Park)

**1.3%**



UEI

**400 staff** across 4 units

CONSORTIUM

**25 years of pioneering research**

**25+ full-time researchers**

**10+ research reports each year**

TEACHER ED

**155 teacher graduates**

**90% of graduates continue teaching after 5 years**

compared to half of all teachers leaving the profession within 5 years nationally

SCHOOL

**4 campus Pre-K - 12 charter school**

**1900 students** on the South Side of Chicago

**100% college acceptance** 4 years in a row

IMPACT

**60 major cities** across **29 states** use UEI tools

**1000s of schools**

**2.8 million students**

supported in focusing on what matters most for reliably excellent schooling



Crime Lab





reduced violent crime arrests by  
**44%**

attracted  
**\$2.5 million grant**  
to expand BAM

BAM became model for  
**White House Initiative**

December 2014, launched  
**Crime Lab New York**





**CRIME**

**EDUCATION**

**ENERGY &  
ENVIRONMENT**

**HEALTH**

**POVERTY**

The creation of more than

1,100 jobs



# COMMUNITY PROGRAMS **ACCELERATOR**

AT THE UNIVERSITY OF CHICAGO



**100+ applications**

11 non-profits supporting

**23,000 people**

**100 organizations**

participated in 12 workshops

**5 programs**

incubating on campus



# CLA CIVIC LEADERSHIP ACADEMY

---

AT THE UNIVERSITY OF CHICAGO



**100+ applicants**

**28 fellows**

**132 hours**

in the classroom

UChicago faculty from

**5 professional  
schools**



@DRBDouglas

@uchiengagement



The creation of more than

**1,100 jobs**

---

The opening of more than

**24 new  
businesses**



@DRBDouglas

@uchiengagement





@DRBDouglas

@uchiengagement

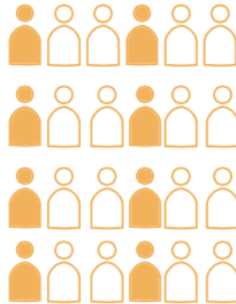


## THE UNIVERSITY OF CHICAGO



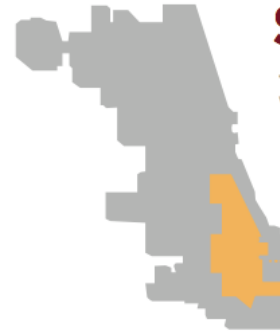
**11,884**

TOTAL STAFF EMPLOYED  
BY THE UNIVERSITY  
WHO RESIDE WITHIN  
THE CITY OF CHICAGO <sup>4</sup>



**1 in 3**

UNIVERSITY STAFF  
MEMBERS WHO  
RESIDE WITHIN THE  
MID-SOUTH SIDE



**\$579,658,912**

TOTAL WAGES PAID OUT TO STAFF WHO RESIDE  
WITHIN THE CITY OF CHICAGO <sup>5</sup>

**\$230,085,725**

TOTAL WAGES PAID OUT TO STAFF WHO  
RESIDE WITHIN THE MID-SOUTH SIDE

## UCHICAGO VENDOR NETWORK



**871**

TOTAL EMPLOYED BY THE VENDOR NETWORK  
WHO RESIDE WITHIN THE CITY OF CHICAGO

**\$18,080,945**

TOTAL WAGES PAID OUT TO THOSE WHO  
RESIDE WITHIN THE CITY OF CHICAGO



**271**

TOTAL EMPLOYED BY THE VENDOR NETWORK  
WHO RESIDE WITHIN THE MID-SOUTH SIDE

**\$6,504,927**

TOTAL WAGES PAID OUT TO THOSE WHO  
RESIDE WITHIN THE MID-SOUTH SIDE

UCHICAGO**LOCAL**



**20 local businesses**

trained on core skills

**250 workforce  
practitioners**

received professional  
development training

**\$400,000+**

in increased contracts for  
small, local businesses



# CHICAGO INNOVATION EXCHANGE



AT THE UNIVERSITY OF CHICAGO




more than  
**950 members**

more than  
**\$2.5 million**  
in raised capital

more than  
**328 programs**

with  
**11,369 attendees**

A group of children, mostly of African descent, are climbing a yellow staircase. They are wearing maroon shirts. The background is a red brick wall. The quote is superimposed on the wall.

"Knowledge isn't power until it is applied."  
~Dale Carnegie



The  
from intent

to **Impact**

University